



THE BRIDGE NETWORK  
OF CHURCHES

# Leading Well

EQUIPPING LEADERS  
FOR MINISTRY

*Thursday, October 26*  
*Exmore Baptist Church*  
*11624 Occohannock Rd.,*  
*Exmore, VA*


*5:30 Dinner with \$10 Paid Reservation*

*6:30 1st Breakout Session*

*7:30 2nd Breakout Session*

*Please register for meals by Thursday, October 19*  
*<https://www.exmorebaptistchurch.com/fallleadership>*

## BREAKOUT SESSIONS



- Developing Effective Outreach Strategy for Rural Areas
- Leading Your Church to Healthier Digital Habits
- Building a Multi-Generational Church (1st Session)
- Communication and Listening Skills for Leaders (2nd Session)
- Developing and Growing a Children's Ministry
- Developing and Growing a Student Ministry
- Deacon Recruitment and Training



Staff  
and  
Spouse  
Birthday

- |    |                  |                  |
|----|------------------|------------------|
| 3  | Alex Zabel       | Horizon          |
| 5  | “Kit” Laxton     | Exmore           |
| 7  | Ruth Castleberry | Great Bridge     |
| 8  | Yvonne Price     | Holy Trinity     |
| 9  | Connie Inman     | Black Creek      |
| 10 | Danny Moore      | Fairview Heights |
| 15 | Jay Albritton    | LifePoint        |
| 16 | Chris Cunningham | GO               |
| 17 | Grayson Leach    | Spurgeon         |
| 23 | Jerry Tucker     | Catalyst         |
| 23 | Robin Houston    | Point Harbor     |
| 24 | Amos Eby         | Southside        |
| 25 | Will Langford    | Great Bridge     |
| 25 | Pedro Sanchez    | Mappsville       |
| 25 | Aubrey Houston   | Point Harbor     |
| 26 | Bruce Purnell    | First Camelot    |
| 28 | Martin Jones     | First View       |

## WHY OUR FAMILY TITHES (1)

“The earth, and all its fullness, is the LORD’s.” (Psalm 24:4)

This verse expresses something about God’s personal nature and how He handles His possessions. **Our God is not a self-centered God!** Look at how He freely shares the beauty and resources of this planet with us. He does not withhold oxygen or water or light out of fear that He might need it somewhere else. He does not require a monthly fee for use of the body we live in, even though it, too, belongs to Him (see the rest of verse 4). He is an extravagantly generous God Who created an entire universe for us to discover and explore – with no tickets to purchase, no entry fees to pay and no taxes for using His property.

One way our family gives thanks to Him for His generosity to us is by giving back to Him a tenth of the financial favor He has shown to us. We do not give the “tithe” out of obligation, as if it is owed to Him like a tax. Nor do we give it with a grunt of resentment, thinking the tithe spent on us would give us a better lifestyle.

Instead, we give gladly for three reasons:

First, **we give out of APPRECIATION.**

When someone gives us a gift, it is the right thing to do to say, “Thank you.” But, when God lavishes us with His love and grace and forgiveness and friendship and promise of an eternal home, words alone, to us, seem insufficient to express our gratitude.

I know how lost I was when Jesus found me and how broken I was when He saved me. The changes He has made in me are measurably remarkable, and I want to be like the one leper who returned to Him and gave thanks for His healing!

The thank offerings of the Hebrews were given for just that reason; words alone were inadequate to express their gratefulness for God’s provision.

Nothing we could offer Him would ever be enough to thank Him properly, but when I look to the Scriptures for an amount He asks, the tithe is mentioned far more than any other amount.

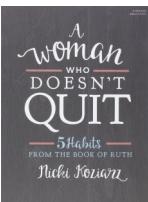
So, we tithe with a truly grateful heart!

*Lynn Hardaway,*  
Network Missionary



### WMU’S ANNUAL MEETING

The Annual meeting will be held on Tuesday, October 10, at Spurgeon Church located at 8026 Old Ocean View Road. The meeting will begin at 10am.



### NEW RESOURCE

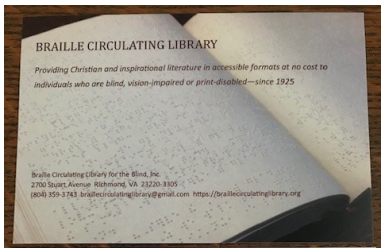
## Five Habits of a Woman Who Doesn't Quit

By Nicki Koziarz

Have you ever gotten to the place where you just couldn't take it anymore? Dreams, Programs, Jobs, Relationships; there are so many areas where we feel like calling it quits. In this study you will **Evaluate** the internal personal struggles that make you want to quit, **Cultivate** consistent habits to help you progress toward your goals, and **Receive** a fresh dose of perspective from the Bible that will help you develop perseverance.

Call, 757-938-9793, or come by the office to reserve this study.





## CHRISTIAN BRAILLE CIRCULATING LIBRARY FOR BLIND AND LIMITED SIGHT INDIVIDUALS

Sometimes, vision impaired and blind individuals find it difficult to study God's word and read uplifting materials. Fortunately, the Christian Braille Library provides materials in braille, in large print, and in audio formats free of charge. Materials are housed in a library in Richmond and shipped to recipients free of charge for six weeks. A list of available materials can be found on their website. For more information and/or to support their ministry, please contact:

Braille Circulating Library  
(804) 359-3743

[braillelibed@gmail.com](mailto:braillelibed@gmail.com)

<https://braillecirculatinglibrary.org>



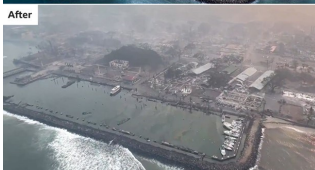
### ISRAEL TRIP



Fifty people from churches in the Network will be traveling to Israel this month. Please pray for their safety, enjoyment, and that this trip will bring the Bible more

alive in their walk with Christ.

### Hawaii Fires Fund Update



We have collected \$21,692.46 to be sent to Hawaii Pacific Baptist Convention to assist the victims of the wildfires. Thank you for your generosity! What a blessing this will be for those affected by the fires.

### CELEBRATING KIM'S 30TH ANNIVERSARY



At the Fall Gathering, we celebrated Kim Jessie's 30th Anniversary serving the Network's churches. Thank you Kim for 30 Faithful Years of Service!



### THANK YOU FOR 30 YEARS

On August 1, I celebrated 30 years with the Network. Thank you for allowing me to serve you with the gifts God has given me. You are beautiful people who love to serve the Lord, and I am blessed to serve alongside of you as you seek to fulfill the Great Commission in your communities. Thank you for the cruise. David and I look forward to a week of fun and relaxation while sailing the beautiful seas. Thank you again for your love, support, and encouragement over these many years together.

*Kim Jessie*

### OCTOBER IS PASTOR APPRECIATION MONTH

Think of some way you can show your appreciation to your Pastor this month through an act of kindness such as: take the Pastor to lunch or coffee with no agenda and pay for it, bake him his favorite food, write a sincere note, take a special offering and give it to him and his family, pay for him and his wife to go on a "get-away", give him gift certificates to his favorite restaurant or Amazon gift cards, and pay for a tank of gas for his car.





1407 Stephanie Way  
Suite F  
Chesapeake, VA 23320



### **BABY BOUTIQUE**

Fall is in the air and cooler weather is coming. While cool weather is refreshing after a long, hot summer, that also means mothers will be in need of warmer clothing for their little ones. We offer a onetime shopping trip to mothers or caregivers with children age 2 and younger. If you know of anyone in your church or community that could use clothing or other items for their children, have them go to [www.thebridgenet.org](http://www.thebridgenet.org), under Resources and fill out a Baby Boutique application. Once I receive the application, I will contact them for an appointment.

We gladly accept most donations at Baby Boutique. We do not accept cribs or car seats and a few other items. If you or anyone you know has gently used baby clothing size newborn thru size 2 or other items suitable for children two or younger to donate, please contact me directly for drop off plans or any other info. Thank you!

Bonnie Cuthriell, Director  
(757) 681-7056



Office Phone: 757-938-9793

Network Missionary  
Leadership & Ministry Strategist  
Support Team Leader  
Office Secretary-Norfolk  
Office Secretary-Eastern Shore

Staff Connections

Donald Lynn Hardaway  
Kim Jessie  
Phyllis Wroton  
Nichole Hensley  
Betty Roberts

Website: [www.thebridgenet.org](http://www.thebridgenet.org)

[lhardaway@thebridgenet.org](mailto:lhardaway@thebridgenet.org)  
[kjessie@thebridgenet.org](mailto:kjessie@thebridgenet.org)  
[admin@thebridgenet.org](mailto:admin@thebridgenet.org)  
[officesec@thebridgenet.org](mailto:officesec@thebridgenet.org)  
[broberts@thebridgenet.org](mailto:broberts@thebridgenet.org)